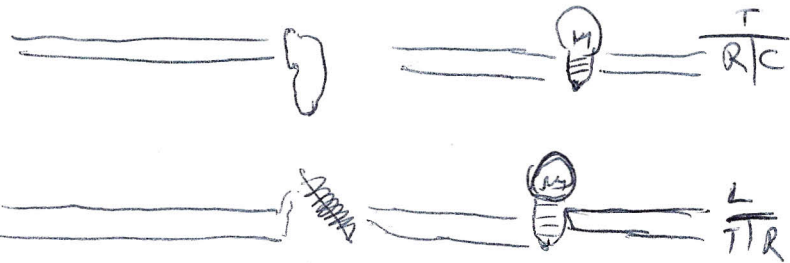


Intro to Inductors

Part 2

①



Compare the two

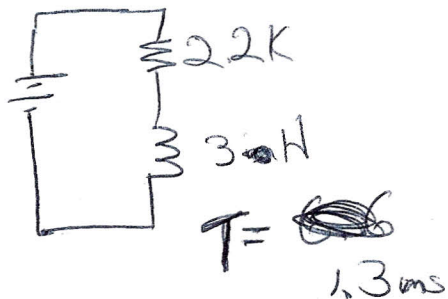
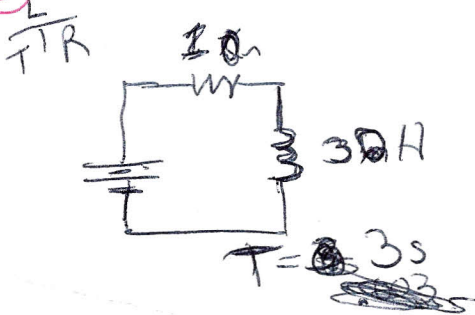


Compare the two
they do the opposite but can be used
to do the same thing.

②

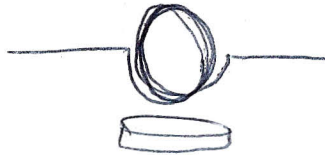
Hand out several circuit board
compare the # of Cap to Inductors.
Why so many more Caps?

③



$R = 20\Omega$	32Ω	100Ω	320Ω
$10H$	$32H$	$.2H$	$640H$
$.5s$	$2s$	$2ms$	$2s$

4



- Build Electric Motor -