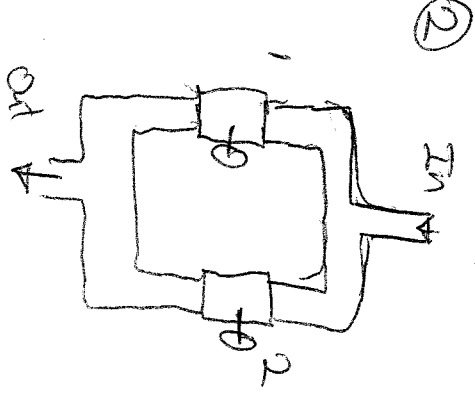


Intro to Current

① Welcome to Plumbing 101



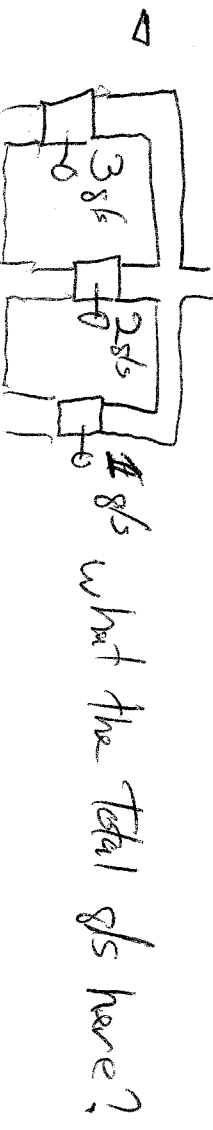
②

→ If you have 10 gal of water coming out how much do you have going in?

→ If #1 open & #2 closed what will happen?

→ If #1 = open & #2 half way close ... ?

→ If you have 3 gal thru #2 & 2 gal thru #1 what's your total current?



③

→ If 10 was going out how much going in?

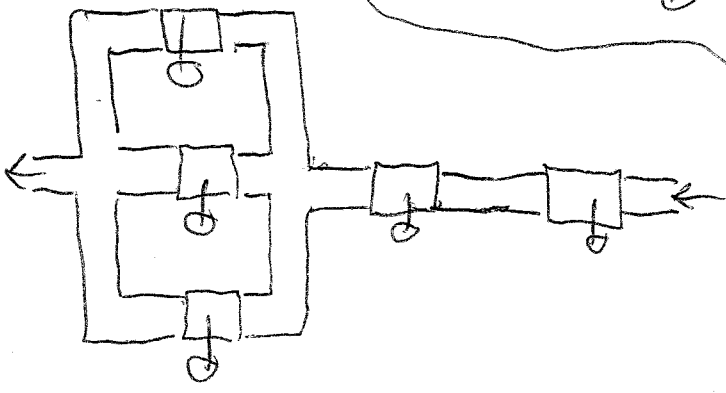
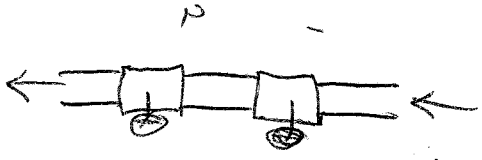
→ How much going thru #1, #2?

→ If #2 was off How much is going thru #1, #2?

→ If #1 was off How much is going thru #1, #2?

④

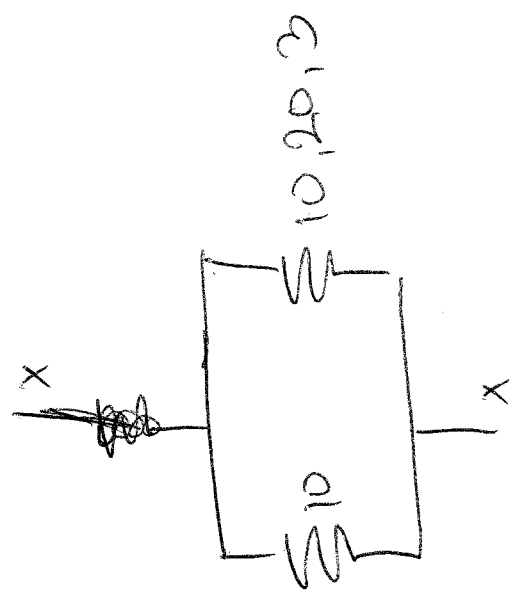
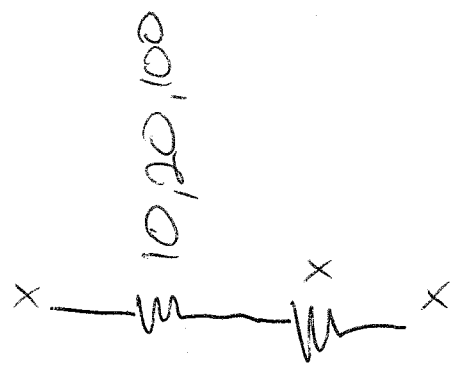
→ If 5 was going thru #1 How much in, out, #2



⑤

Current = I

In Amp = A



⑥

Assignment

