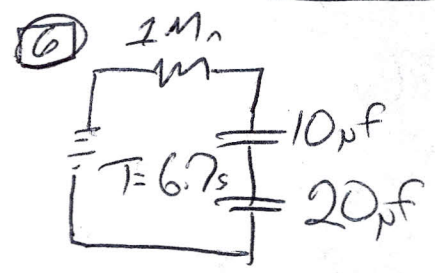
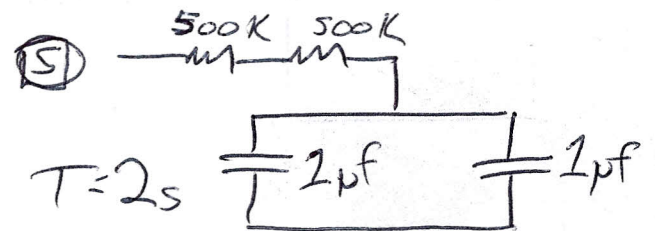
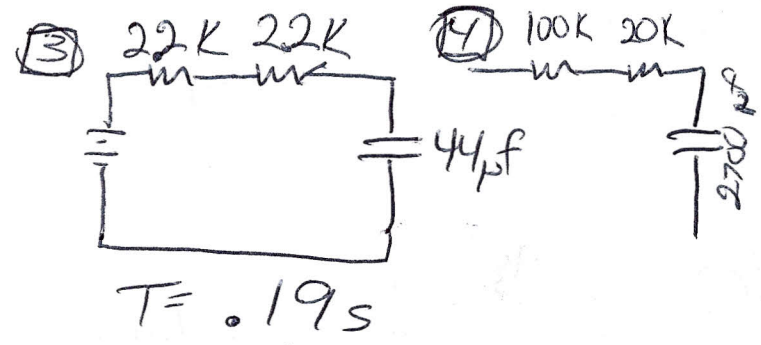
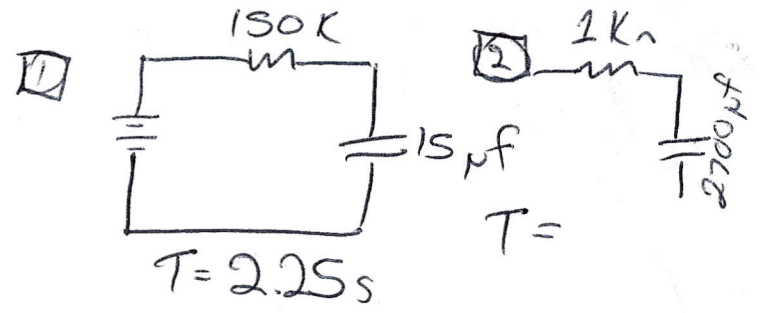
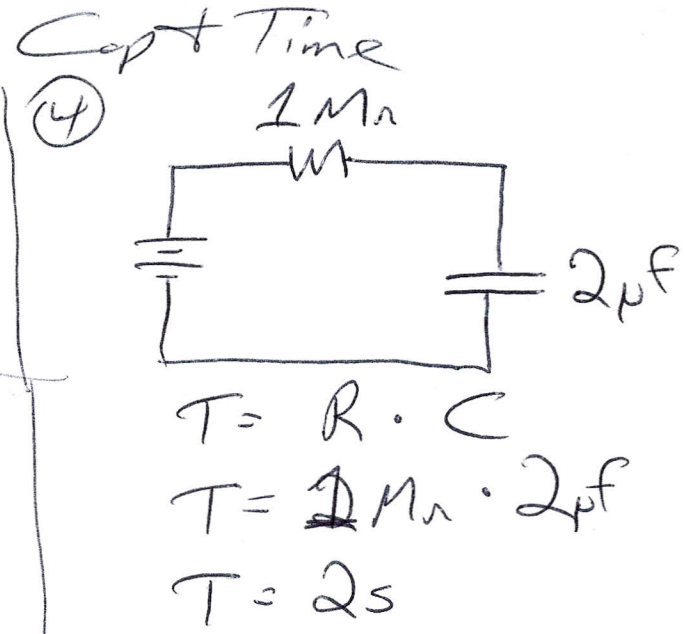
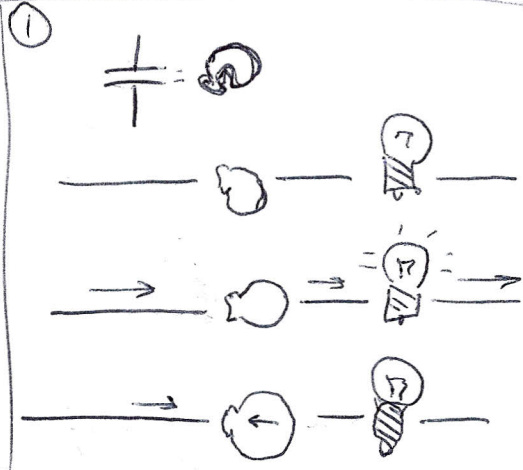


- Objectives -

- Know R & C
- Build an RC Timer



② What controls how fast air goes in/out of the balloon?
 → How big the hole is, the hole/opening restricts the air flow
 What do we have that could restrict the current flow?
 → Resistor

③ Here is the formula

$$\frac{T}{R \cdot C}$$

Time
Res | Cap

- So if you have a resistor that resists a lot then it will take a lot longer to charge.
- And if you have a really big cap it will take longer to charge

