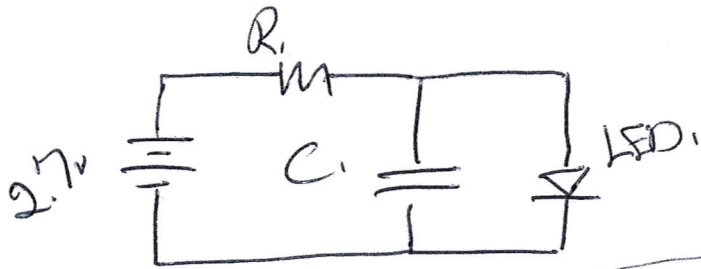


RC Delay Timer

$$R = \frac{T}{C}$$

Steps to build timer



① Resistors:

- Combine resistors to make desired resistance
- Test & Fix - Use a multimeter to make the resistance as perfect as possible.

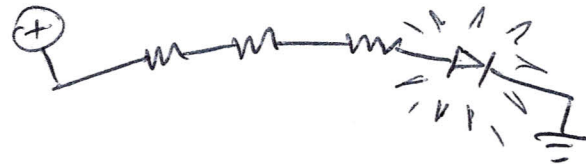
$$R = \frac{T}{C} = \frac{5}{.0081} = 617$$



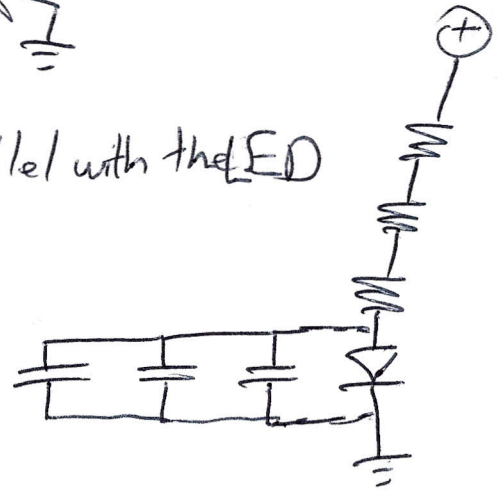
	T	C	R
Sample	5 sec	8100 pF	617 Ω
#1			
#2			
#3			
#4			

② Add an LED:

Place an LED in series with the resistors.



③ Add Caps in parallel with the LED



④ Test & Adjust:

See if the timing is right.

Adjust the resistance to make it as close as possible

Hint More resistance = Longer delay time.